

Assembly Instructions Deluxe Outfitter Blind

1. **Your new blind is already assembled! This is how to use your new blind.**
2. Lay your blind out flat. If the outer straps are fastened to keep blind shut, unlatch these buckles.
3. Simply unfold the blind. The frame at your feet will automatically rise. (photo 1)
4. Open your doors and simply slide the **two rear** supports up to the top of the back frame. (photo 2)
5. There are two pins at the top of these supports. We have found we simply slide the supports up and **we do not use the pins**. Try your blind this way. If you want to use the pins, simply line up the holes and insert. (photo 3)
6. On the inside of each door there is a zipper. Open these zippers and there is a slide bar that will solidify the door frame. Just slide this bar closed and the door frame will be one solid piece. Repeat on the opposite door. Zip the closures shut. (photo 4)
7. Now adjust the seat to your comfort with the two buckles found under the seat. Your blind is now ready for action. This whole process will take less than a minute! (photo 5)
8. **To collapse your blind, simply reverse.**
9. Open the door zippers, slide the slide bar on the door frames open. This will allow the door to bend as you fold the blind back up. (photo 6)
10. Lower the two rear supports. This will collapse the seat flat. (photo 7)
11. Now simply close the doors and grab your boot bag and fold. (photo 8)
12. **That's it! Now you can snap your buckles to secure the blind in the folded position.**



Photo 1

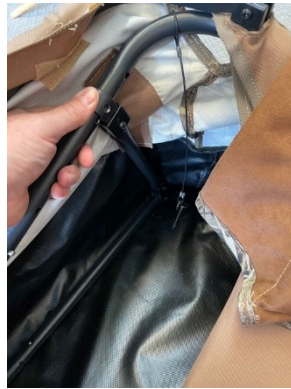


Photo 2

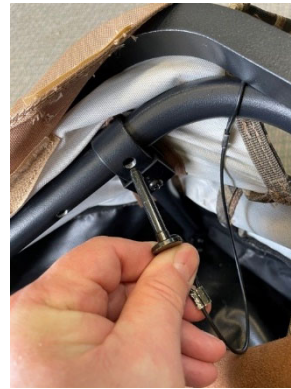


Photo 3

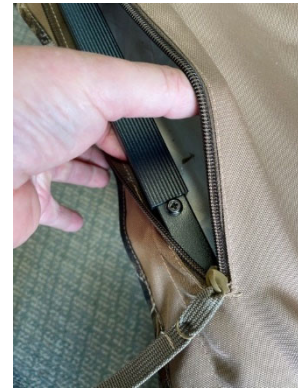


Photo 4



Photo 5

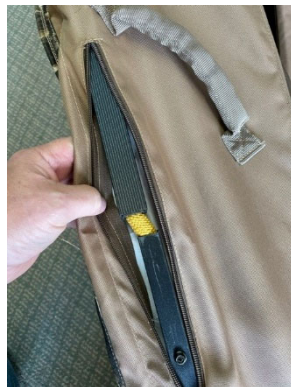


Photo 6



Photo 7



Photo 8